

2019 ANNUAL REPORT

02 REFLECTIONS FROM BOARD CHAIR & GM

03 FINANCIALS AND NUMBERS

04 ON THE AIR

06 IN THE COMMUNITY

08 INFRASTRUCTURE

09 PROGRAMMING

10 DONORS

12 UNDERWRITERS & FOUNDATIONS

14 BOARDS & STAFF

CONTACT US

WWW.HAWAIIPUBLICRADIO.ORG
MAIL@HAWAIIPUBLICRADIO.ORG

 HAWAIIPUBLICRADIO
 @WEAREHPR
 @WEAREHPR

Hawai'i Public Radio
Annual Report 2019
February 2020
Volume 15

Published annually by:
Hawai'i Public Radio
738 Kāheka Street Ste 101
Honolulu, Hawai'i 96814-3726



2

0

1

9

Reflections

From the President & General Manager and Chair of the Board of Directors



José A. Fajardo. Photo: Tracy Wright Corvo



Barbara Hastings. Photo: Marc Schechter

“Doing radio” in Hawai‘i comes with some unique challenges; at the most basic level, our islands are scattered across several hundred miles and are peppered with geographic features that require an array of transmitters and boosters to provide a clear radio signal. Beyond the technical requirements of the airwaves, though, we also strive for a deep connection with all of our listening communities.

As we reflect on the past year, we’re most proud of the progress we’ve made in ensuring that our reporting, programming, outreach, and leadership truly reflect the diverse spectrum of our islands.

We’ve grown our local news coverage to include more neighbor island voices and stories in our reporting, most notably during the recent events on Mauna Kea. Our weekday news and talk program *The Conversation* continues to feature topics and callers from across the Hawaiian Islands.

We’ve made important steps within our station’s leadership, as well. Our Board of Directors has representatives from across the islands, and elected its first neighbor island chair, Barbara A. Hastings, who resides in Hilo. Our Community Advisory Board also welcomed its first neighbor island chair, Nancy Budd, of Kaua‘i.

Once again, we brought community events to the neighbor islands. In partnership with film director Nā‘ālehu Anthony, we offered screenings of the documentary *Moananuiākea* to Maui, Kaua‘i, and Hawai‘i Island, as well as to O‘ahu. These events were made all the more special by the attendees who came out to support and engage with HPR in their own neighborhoods.

Finally, and perhaps most exciting, we have expanded our infrastructure to provide better coverage where it’s needed; in November, we announced the acquisition of a transmitter on Lāna‘i (licensed to Kualapu‘u, Moloka‘i) which now provides a strong signal to West Maui, Lāna‘i, and Moloka‘i. The frequency, 103.1 FM KJHF, named to honor HPR’s first chair, John Henry Felix, went live on January 13, 2020.

We greet 2020 with a robust strategic plan, backed by the financial stability to continue fulfilling our mission and realize our vision for listeners across the state. We are so appreciative of supporters like you for making all of these accomplishments possible. Whether you live in Honolulu, Hōlualoa, Hanalei, Hāna, or beyond...thank you, as always, for believing in HPR.

Mahalo nui loa,

José A. Fajardo
HPR President & General Manager

Barbara A. Hastings
Chair, HPR Board of Directors 2019-2021

Mission: The mission of community-driven HPR is to educate, inform, connect, and entertain.

Vision: HPR will be a valued, vital, and vibrant local community service that inspires the community it serves to engage with the world from multiple perspectives.

— from HPR’s Strategic Plan, July 2019

PLANS FOR 2020 INCLUDE...



A series of community roundtable events in partnership with Hawai‘i Community Foundation



Investing more deeply in local reporting on relevant topics across the state



Local and national coverage of the 2020 elections



Strategic planning for the station’s next phase of growth



YOUR CONTRIBUTIONS USED WISELY

HPR maintains its financial viability through fastidious record keeping, careful management, and strategic investing. Our financial “bill of health” boasts:

- A balanced budget
- A balance sheet free of debt
- A clean financial audit
- Four stars from Charity Navigator

NEWS

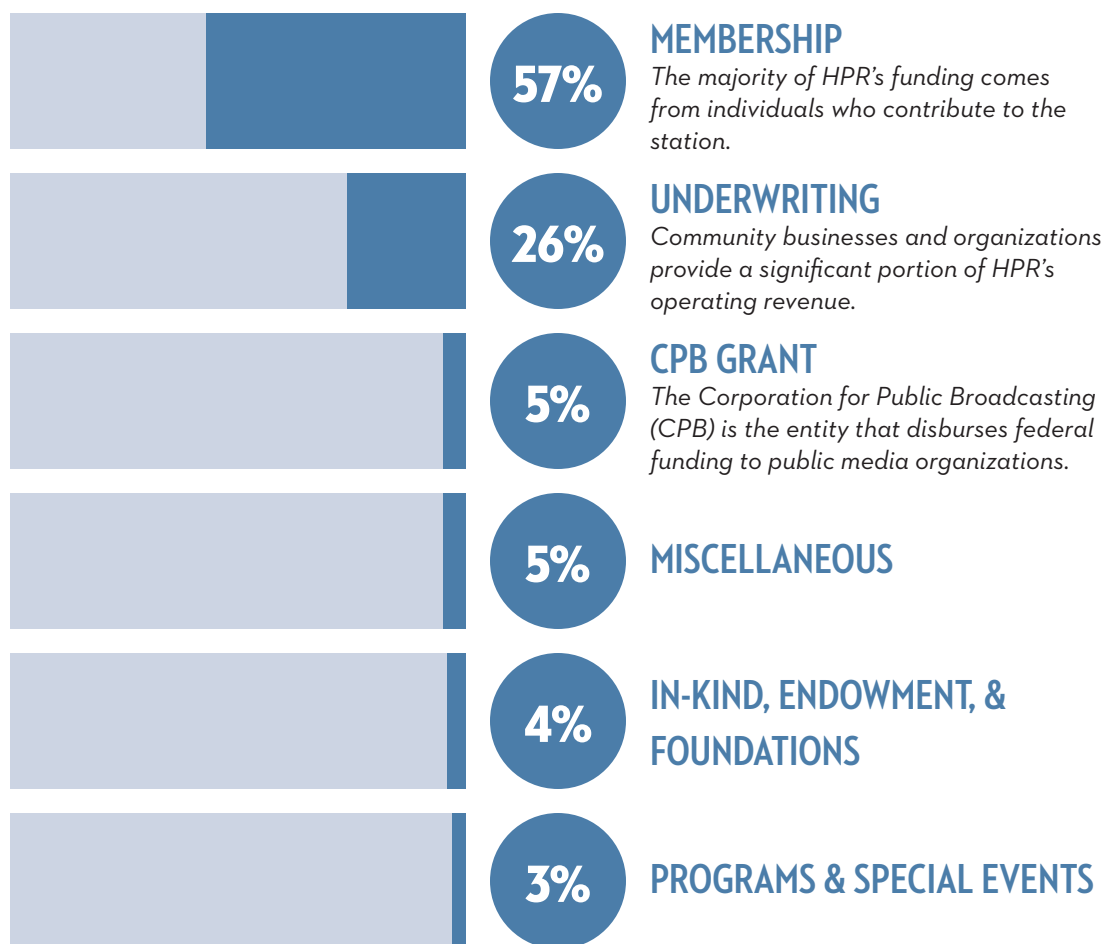
- More than 40 HPR-produced stories were broadcast nationally on NPR. Topics included Mauna Kea, research into impacts of coral bleaching, and teacher salaries.
- HPR’s newsroom also filed stories with Canadian Broadcasting Corporation (CBC), Marketplace (APM), and the NPR Up First podcast.
- Nearly 800 local news stories were filed by HPR’s award-winning news team.
- In April 2019, NPR was named the Harris Poll EquiTrend News Service Brand Of The Year, and was also named Most Loved Brand based on the 2019 Harris Poll EquiTrend Study.

By The Numbers

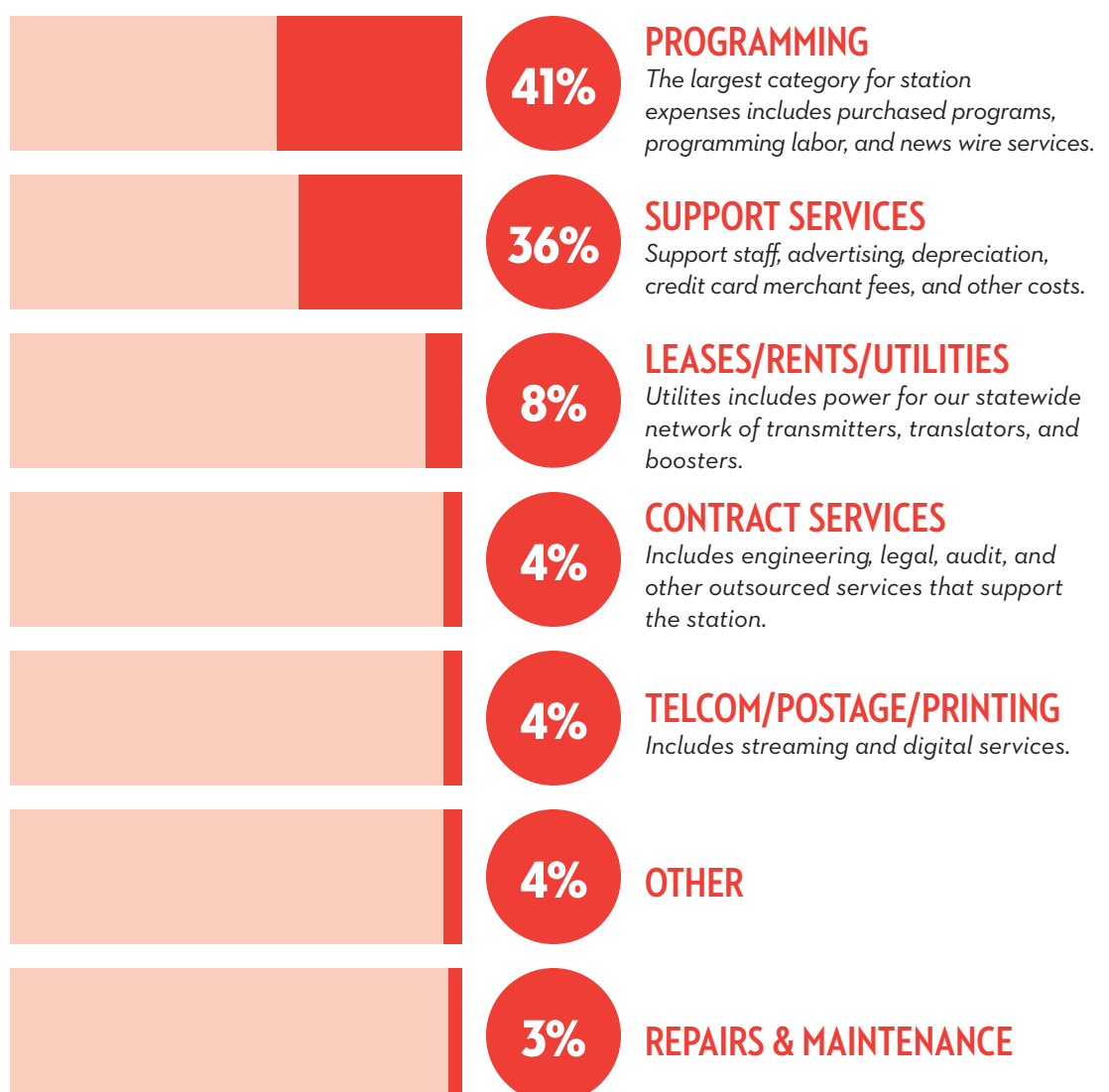
HPR's Fiscal Year 2018/2019

REVENUE: \$6,404,407

95% OF OUR REVENUE COMES FROM THE COMMUNITY



EXPENSES: \$5,541,196



News/Talk

HPR's local news team continues to grow and provide reporting that matters to our audience.

Context, continuity, and perspective

One of the things that distinguished HPR's 2019 news reporting was a concerted effort to follow stories over time, to not just report on developing events, but also check back in after the dust had settled. This kind of coverage takes time and resources, but it provides the listener with more context and perspective.

Seeing it through

When natural disasters affect people's lives, the impact lasts long beyond the news cycle; we consider it part of our kuleana to follow up on those affected by the forces of Mother Nature. In that spirit, 2019 was marked by follow-ups on several major stories after they first broke, including Kilauea's eruption on Hawai'i Island, which destroyed 1,000 structures and affected hundreds of lives, and the flooding that destroyed the only highway along Kaua'i's North Shore in 2018.

- "What Did (And Didn't) Cause The Kilauea Eruption" (Apr 23, 2019)
- "Kilauea, One Year Later: Volcanic Hazards Remain A Threat" (May 1, 2019)
- "New Marine Life On Coastline Emerging In Wake Of Kilauea Eruption" (Nov 18, 2019)
- "As Kaua'i Highway Prepares To Reopen, State Plans Limits On Hā'ena Park Visitors" (Apr 15, 2019)
- "Officials Postpone Kūhiō Highway Reopening In Wake Of Community Concerns" (Apr 30, 2019)
- "Kaua'i's Kalalau Trail To Reopen, But With Changes" (Jun 12, 2019)



Kilauea's 2018 eruption. Photo: Buzz Andersen

Local voices on island issues

Exploring Mauna Kea from numerous viewpoints

The developments surrounding the proposed Thirty Meter Telescope (TMT) atop Mauna Kea were some of the most riveting news stories of the year. HPR's Ryan Finnerty was on the ground on Hawai'i Island from the first day of the protests; the coverage he provided ran locally and was also picked up by NPR for national broadcasts. Other reporters and producers put together stories and interviews highlighting various aspects of the developments.

- "Exploring The Native Hawaiian Belief In The Sacredness of Mauna Kea" (Aug 5, 2019)
- "The Conversation: Scientific Perspectives On Mauna Kea" (Aug 15, 2019)
- "Why Hawaiian Flags, Parking Tickets, Arrests Are Raising Free Speech Questions" (Nov 18, 2019)

Keeping you informed with thoughtful conversation

HPR's local topics call-in show *The Conversation* (weekdays 11 a.m. - noon on HPR-1), continues to cover subjects of interest and relevance to the community. Over 2019, shows highlighted topics such as the Kahuku Wind Farm, electric vehicles, and staffing shortages in the medical field. The show also featured guests representing various perspectives on the TMT debate.

Some of *The Conversation's* most popular shows involved a partnership with the University of Hawai'i Oral History Center. The project explores important moments in Hawai'i's history through audio clips from the Center's archives. Shows focused on women in the pineapple canning industry, the legacy of lei sellers, and taro farming on Hawai'i Island. Listeners from across the state called in to share their own (sometimes bittersweet) memories of these bygone times.

Covering crucial statewide topics

As a statewide service, we continually strive to cover issues that affect the entire state. For example, our Planet808 series explored climate change in Hawai'i through the lens of agriculture, natural disasters, rising tide levels, and youth engagement.

- "How Prepared Is Hawai'i To Deal With Dangerous Heat?" (Jul 5, 2019)
- "Hawai'i Students Join #ClimateStrike, #StrikeWithUs" (Sep 20, 2019)
- "Farming As A Climate Crisis Ally" (Sep 3, 2019)

In addition to local coverage, HPR continued to provide news and stories from around the world, by broadcasting stories from NPR, the Associated Press, BBC, and other news outlets.



On the ground reporting from Mauna Kea. Photo: Kū'uwehi Hiraishi



Catherine Cruz. Photo: Jason Taglianetti

Recognition & growth

Deepening local reporting with HCF

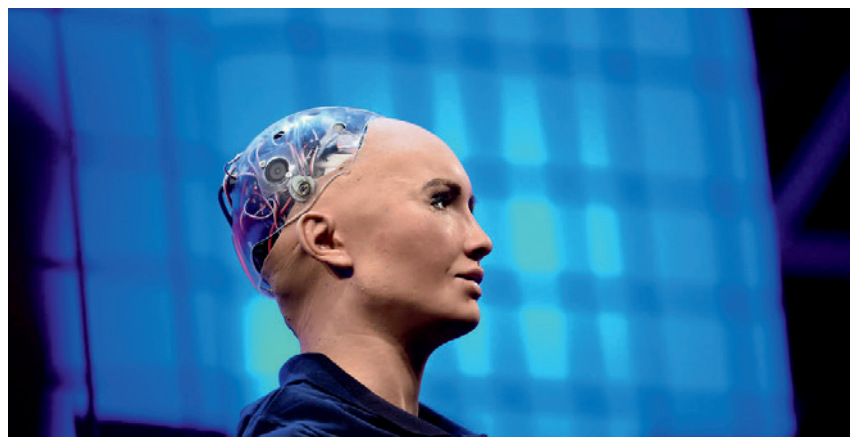
In April, HPR was awarded a \$200,000 grant from the Hawai'i Community Foundation, as part of its CHANGE initiative. The grant enabled the station to hire a general assignment reporter (Ashley Mizuo, who joined the station in August) and extend its coverage of community, economy, and education. Over the course of the two-year partnership, HPR will develop a series of events to engage communities around these locally relevant topics.

Award-winning journalism

Government & Public Policy Reporter Ryan Finnerty won first place for best feature story in the Radio II division in the 2019 Associated Press Television and Radio Association honors. The winning story, "Artificial Intelligence Will Transform the Hospitality Industry" was described by judges as "a creative look at the potential impact of artificial intelligence on the hospitality industry."



Micah Kane of Hawai'i Community Foundation and HPR's José A. Fajardo. Photo: Dabney Gough



AI in the visitor industry. Photo: Web Summit Sm5,7157 - Flickr

Music

Despite the decline of many dedicated classical music stations across the country, classical music is thriving on HPR-2, your home for classical music. And HPR-1 continues to offer a wide variety of jazz, blues, and alternative/eclectic programming.

Education, expertise, and enrichment through music

HPR's local classical music hosts receive high marks from listeners for the thoughtful and imaginative ways they program music for our enjoyment. Listeners had a chance to help choose the music during the Fall Fund Drive by voting for their favorite classical genres—the #1 genre: Baroque!

Going strong with jazz programming

Jazz remains a cornerstone of HPR-1's music lineup with 14 hours of dedicated jazz programming every week. Host Charles Husson keeps listeners up to date with the contemporary scene on *Evening Jazz* (Monday-Thursday, 8-10 p.m.), while Seth Markow explores the roots and evolution of jazz over time on *The Real Deal* (Saturday and Sunday, 8-10 p.m.).

Welcoming hosts to the 'ohana

Bridging the Gap welcomed Harrison Patiño and Paige Okamura (DJ Mermaid) as two new hosts for the eclectic show (Weekdays, 10 p.m.–midnight on HPR-1). Okamura shares music through a Hawaiian perspective, while Patiño brings a deep knowledge of indie rock; both curate sound from a youthful vantage point.

Bringing local performances to all

An important part of HPR's mission is to share local arts with a broader audience. HPR continues to partner with Hawai'i Symphony Orchestra to broadcast select performances from the HSO season on HPR-2, including interviews with conductors and performers, for listeners across Hawai'i and beyond.

ACROSS HPR-1 AND HPR-2, MORE THAN 40% OF MUSIC PROGRAMMING HOURS ARE LOCALLY HOSTED AND PRODUCED.



Hawaiian Style Band at the Atherton. Photo: Malia Collins

Live & In The Community

HPR is more than just radio programming. In 2019, we found ways to connect with our community of listeners face to face, at the station and across the state.

Live in the Atherton

HPR concerts are thriving

Atherton Performing Arts Studio concerts, now in their 21st year, offer the community the opportunity to experience live music in the intimate setting of HPR's Atherton. Artists in 2019 represented genres as diverse as Latin jazz, modern harp, bluegrass, Celtic, opera, Brazilian guitar, Hawaiian, folk, and more. One of the most popular acts of 2019 was Hawaiian Style Band, who joined HPR for two sold-out concerts as well as a salon-style talk story event. Selected performances are broadcast on *Applause In a Small Room* (Sundays at 4 p.m. on HPR-1).

Serving as a studio for live recordings

HPR's Atherton Studio served as the recording venue for two LP singer-songwriter records this year: one from soul singer Maryanne Ito, and another from contemporary Hawaiian artist Duncan Kamakana, each one titled *Live At The Atherton*. These live recordings showcase not only local musical talent, but also capture and share the near-perfect acoustics of the Atherton Studio itself with a broader audience.

Connecting with our listeners

One ocean. One people. One canoe.

HPR shared *Moananuiākea*, the documentary about Hōkūle'a's landmark worldwide voyage, with audiences on O'ahu, Hawai'i Island, Maui, and Kaua'i. Together, these events drew more than 1,300 attendees for a screening of the film followed by a Q&A with filmmaker Nā'ālehu Anthony and Hōkūle'a crewmembers.

Talking story with local partners

We continued our series of free "talk story" events on timely, locally relevant topics, in partnership with Zócalo Public Square and the Daniel K. Inouye Institute. Noe Tanigawa and Catherine Cruz each served as moderators for the panel discussions focusing on tourism, pidgin, and immigration in Hawai'i. The events consistently drew standing-room-only crowds.

This American Life, live in Hawai'i

In partnership with Hawaii Theatre Center, HPR presented an evening with Ira Glass and his multimedia show "Seven Things I've Learned." The December performance was his first in Hawai'i. Attendees learned about Glass' creative process, the making of his show *This American Life*, and what it takes to make a successful radio show and podcast. As a benefit of station membership, HPR members were given early access to the best seats and exclusive access to a meet and greet with Glass.

Hosting local performances

HPR-2 hosts emceed two of Hawai'i Youth Symphony's concerts showcasing young musicians across the state: John Zak hosted the spring concert, and Gene Schiller hosted the winter concert. Both performances were later broadcast on HPR-2, further celebrating and sharing the talents of HYS's young musicians.

Cultivating the next generation

Now in its third year, Generation Listen continues to engage younger listeners with the station and each other, through numerous events in the community. In 2019, the group held 15 events across O'ahu.

Trivia night at Village Bottle Shop was a regular Gen Listen event and drew a broad audience; questions often tied into programming or news heard on HPR.

Gen Listen was also awarded a \$1,000 grant from Matson's Ka Ipu 'Āina program, as part of a beach cleanup event that had more than 40 people in attendance.

The group celebrated their second anniversary with a speakeasy themed party at HPR, which sold out well in advance and drew 121 festively attired attendees.



Ira Glass meets with fans at Hawaii Theatre. Photo: Andy Stenz



HPR staff and volunteers at the Hawaii Book & Music Festival. Photo: Dabney Gough

Behind the scenes

Three years ago, the Community Advisory Board was established as a means to gather input from listeners and members across the state. The inaugural cohort of members completed their term in November. We are grateful for their invaluable insight and support. Following the completion of his tenure as CAB chair, Joseph Uno was voted onto HPR's Board of Directors. The CAB welcomed its new chair, Nancy Budd of Lihu'e, Kaua'i. Budd began a three-year CAB term in 2017.

HPR's Board of Directors welcomed its first neighbor island chair, Barbara Hastings (Hawai'i Island), and welcomed several new members: Dave DeLuca, Chuck Mitsui, Bryan Kapeckas, and Joseph Uno.

During the Fall Fund Drive, HPR hosted a visit from Patricia de Stacy Harrison, president and CEO of the Corporation for Public Broadcasting (the organization that distributes federal funding to HPR). Harrison went on air with HPR President & GM José A. Fajardo, and was also a guest on *The Conversation*.

The News team welcomed Sandee Oshiro as News Editor. This newly created position will continue to improve our news reporting and help it reach new audiences on digital channels. Since joining the team, HPR website users have increased by more than 52%, and unique page views are up by more than one-third. Cat Gelman was promoted to Vice President, Corporate Relations. Cat has been with HPR since 2006. Courtney Thomas was promoted to Membership Manager. Ryan Finnerty was promoted to Government & Public Policy Reporter.



Generation Listen hosting a beach cleanup. Photo: Generation Listen

Listeners say

With my short commute, HPR-1 and -2 were the only radio stations I listened to. Now with the HPR app, I can listen to the program while exercising and doing housework! Super! HPR brings the civility to our life! "

-Jennifer Du-Forstner, Honolulu

Best programming I have ever heard on any NPR station! I appreciate the option of HPR-1 or HPR-2. I am a dedicated 12x7 HPR listener. When we spend our summers in Montana, I still stream HPR as my favorite NPR station."

-Deborah Kimball, Kea`au



Bridging the Gap Host Nick Yee at Hawai'i State Library. Photo: Dabney Gough

2019 Membership

ESTIMATED AVERAGE LISTENERS PER WEEK:

193,200*

*Nielsen Diary Data Spring 2019, Persons 12+ CUME, Honolulu DMA, HPR-1 + HPR-2 Combined.

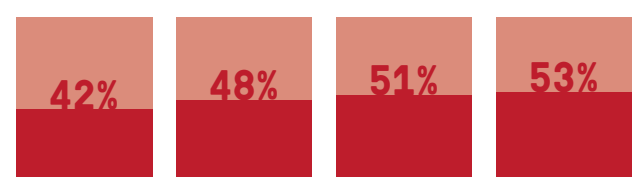
MEMBERS:

2016:	2017:	2018:	2019:
13,182	14,200	14,600	14,889



SUSTAINING MEMBERS:

2016:	2017:	2018:	2019:
5,585	6,789	7,448	7,973



Listen Wherever, Whenever

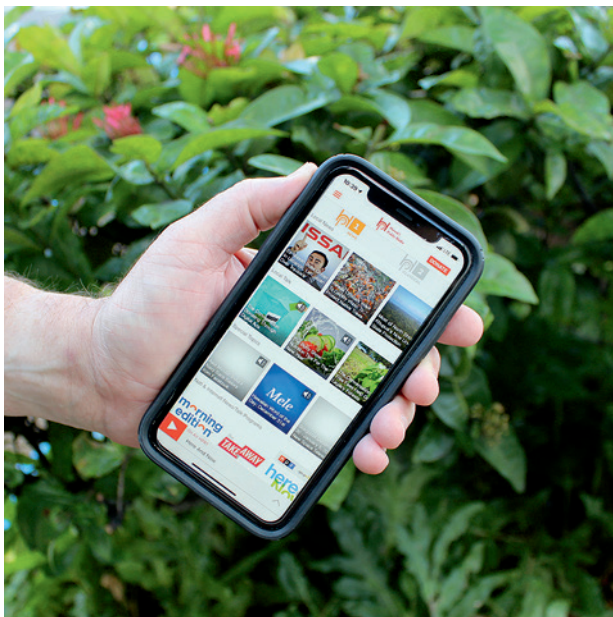
HPR continues to offer new ways to listen to programming—to make our shows, stories, and content available however and wherever our audience wants to listen.

You'll now find *Morning Edition* available on demand on Alexa smart home devices. HPR will soon also be available on iHeart Radio, joining the ranks of smart home devices, streaming on the web, via our mobile app, and more.

In November, HPR celebrated its 38th anniversary with the announcement of the acquisition of a new transmitter on the island of Lānaʻi (licensed to Molokaʻi), which now broadcasts HPR-1 to Lānaʻi, Molokaʻi, and West Maui. This provides a strong signal to areas under the terrain shield created by the West Maui mountains. The frequency 103.1 FM has been assigned the call letters KJHF in honor of Dr. John Henry Felix, HPR's founding chair of the Board of Directors.



KJHF tower on Lānaʻi. Photo: Don Mussell



Access HPR-1 and HPR-2 on your mobile device with the "HPR" app. Photo: Dabney Gough

WAYS TO LISTEN TO HPR:



Radio

HPR-1 & HPR-2



Computer

hawaiipublicradio.org



Phone

Mobile app "hpr" for iOS and Android devices as well as on CarPlay



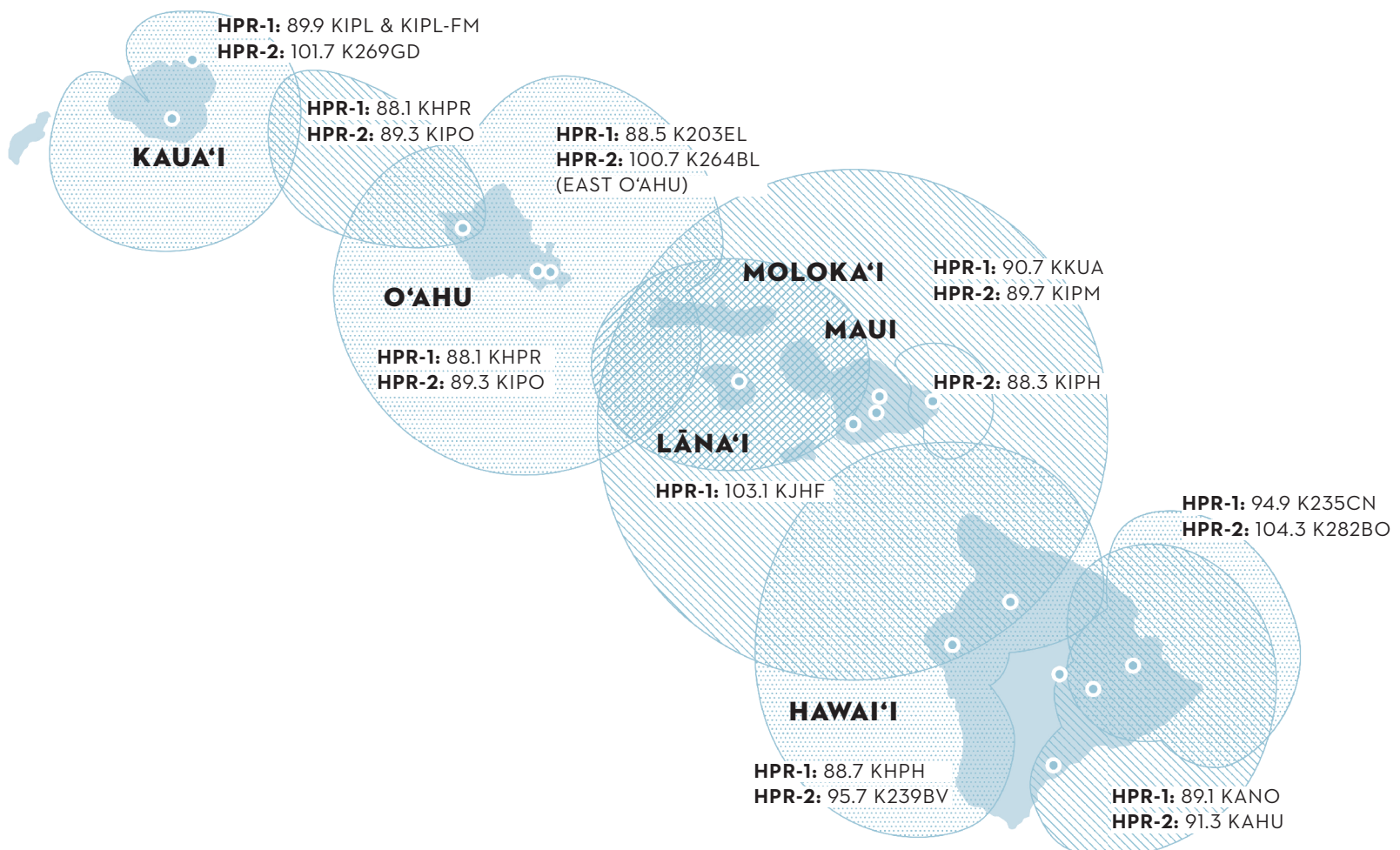
Smart Home Devices

Ask your smart speaker: "Play Hawai'i Public Radio" or "Play Morning Edition."



TV

HPR-1 and HPR-2 are also on broadcast cable: Spectrum (channels 864 and 865) or Hawaiian Telcom TV (channels 661 and 662).



Stay Tuned



NEWS, TALK, ENTERTAINMENT, JAZZ, BLUES, & WORLD MUSIC

HAWAII ISLAND: KANO 89.1, KHPH 88.7, KKUA 90.7, K235CN 94.9; KAUA'I: KHPR 88.1, KIPL & KIPL-FM 89.9; LANA'I, MAUI, MOLOKA'I: KKUA 90.7, 103.1 KHJF; O'AHU: KHPR 88.1, K203EL 88.5

	Sunday	Monday	Tuesday	Wednesday	Thursday	Friday	Saturday
Midnight	Blues from the Basement			Echoes			New Sounds
1 AM							
2 AM							
3 AM	BBC News			BBC News			BBC News
4 AM							
5 AM		5:30 & 7:00 Stargazer (Mon)					
6 AM	Weekend Edition	5:51 & 7:51 Marketplace Morning Report		Morning Edition			Weekend Edition
7 AM		6:04 & 8:04 Asia Minute					
8 AM		7:30 Hawaiian Word of the Day					
9 AM	The New Yorker Radio Hour			The Takeaway			The Splendid Table
10 AM	On Being			Here and Now			Radiolab
11 AM	New Dimensions			The Conversation			Wait, Wait...Don't Tell Me!
Noon	Travel with Rick Steves			All Things Considered			Ask Me Another
1 PM				The World		Science Friday	This American Life
2 PM	Kanikapila Sunday			On Point			The Moth Radio Hour
3 PM				Fresh Air			TED Radio Hour
4 PM	Applause in a Small Room	4:30 Stargazer (Mon)		All Things Considered			Selected Shorts
5 PM	All Things Considered	4:48 Asia Minute					Helping Hand (Fri)
6 PM				Marketplace			
6:30 PM	Brazilian Experience	The Body Show	Counterspin	Bytemarks Café	Says You!	All Songs Considered	American Routes
7 PM		On the Media	Freakonomics Radio	Reveal	Hidden Brain	Left, Right & Center	
8 PM	The Real Deal			Evening Jazz		Latin Beat	The Real Deal
9 PM							
10 PM	B-Sides and Beyond			Bridging the Gap			Blues from the Basement
11 PM							



YOUR HOME FOR CLASSICAL MUSIC

HAWAII ISLAND: KIPH 88.3, KIPM 89.7, KAHU 91.3, K239BV 95.7, K283CR 104.5; KAUA'I: KIPO 89.3, K269GD 101.7; MAUI: KIPH 88.3, KIPM 89.7; LANA'I, MOLOKA'I: KIPM 89.7; O'AHU: KIPO 89.3, K264BL 100.7

	Sunday	Monday	Tuesday	Wednesday	Thursday	Friday	Saturday
Midnight							
1 AM							Classical 24
2 AM							
3 AM	Classical 24			Classical 24			
4 AM							
5 AM							Howard's Day Off
6 AM							Classical Guitar
7 AM							Chamber Music Society of Lincoln Center
8 AM	With Heart and Voice						The Score
9 AM				Morning Café / Morning Concert			From the Top
10 AM	Sunday Brunch						Classical 24
11 AM							
Noon				Performance Today			
1 PM	Sunday Baroque			12n NPR News			
2 PM				Exploring Music			Opera
3 PM	Classical 24			Classical Pacific			
4 PM		5:06 Stargazer (Mon)					
5 PM	Howard's Day Off (encore)		3:00 NPR News/Hawaiian Word of the Day, 4:00 NPR News, 5:00 NPR News				Singing and Other Sins
6 PM				Evening Concert			The Early Muse
7 PM				6:00 NPR News, 7:57 StarDate			SymphonyCast
8 PM		Seasonal Concerts	Collector's Corner	Chicago Symphony	NY Philharmonic	Seasonal Concerts	Millennium of Music
9 PM	Classical 24						Harmonia
10 PM		Classical 24		Classical 24		Classical 24	Classical 24
11 PM							

*Programming on HPR-1 and HPR-2 subject to change.



Station Members

HPR members are those community-minded individuals, families, organizations and businesses whose annual donations provide more than half the funds needed to support this local public radio service. Space limitations prevent us from listing all 14,889 of our current membership, but our appreciation of their gifts at all levels and in the various ways they choose to give is limitless.

(The following contributions were received January 1 - December 31, 2019.)

Cornerstone Society

We celebrate here The Cornerstone Society, station friends who give \$1,000 or more annually. Founding Chair John Henry Felix established the Founder's Circle to encourage and recognize annual support of \$3,000 (\$250/month Sustaining) or more. We are grateful for the extraordinary generosity of all our Cornerstone members.

FOUNDER'S CIRCLE

\$50,000 AND MORE

Ralph E. Vaughn

\$30,000-49,000

Dr. Thomas & Mi Kosasa

\$20,000-29,999

John R. Halligan Charitable Fund
Mareli Foundation
Pikake Foundation

\$15,000-19,999

Friend of HPR (1)
Combined Federal Campaign of Hawai'i-Pacific
First Insurance Company of Hawaii

\$10,000-14,999

Friend of HPR (1)
ABC Stores
Elias Family Philanthropic Fund
Sheree & Levani Lipton
Nuestro Futuro Foundation
Joseph Rothstein & Ann K. Yoklavich
Sidney Stern Memorial Trust
G. N. Wilcox Trust
Jana & Howard Wolff

\$5,000-9,999

Friends of HPR (3)
Darlene Abt
Bauer Foundation
Bendon Family Foundation Inc.
Jim Burke
The Cab & CabBUX

Madeline & Douglas Callahan
Debra & Robert Creps
Carol & Clive Davies
Mr. & Mrs. C. Pardee Erdman, Jr.
First Hawaiian Bank Foundation
Ms. Sandra P. Fricke
Mr. & Mrs. James W. Growney
George & Evelyn Hao
Hawaiian Electric Co.
HMSA
Ifuku Family Foundation
Marianne Steflik Irish Fund
Dr. Tyrie Jenkins & George Norcross
Carol & Edmund Kellett
Jodi A. Lam & Timothy Takaezu
George Mason Fund
Mr. & Mrs. Peter Merriman
Meshewa Farm Foundation

Matt & Corrie Miller
Chuck & Zana Mitsui
O.L. Moore Foundation
Mr. Steven S. Ogata
Mr. Kenneth S. Robbins
Servco Pacific
Mr. & Mrs. Christopher C. Smith
Dawn Suyenaga & Jeff Dinsmore
Weissman Family Foundation
Arne & Ruth Werchick

\$3,000-4,999

Friends of HPR (5)
Armstrong Foundation
Ms. Pat Barron
Marcus Bass
Roger Beck & Eric Anderson
Carroll Capital Management

Roberta & Newton Chu
Paul D. Cool & Betty J. Wood
Mrs. Carol J. Coops
Mr. & Mrs. R. Dougal Crowe
Mr. Edward E. DeMartini
John Henry Felix
Foodland Give Aloha
Katherine S. Heinzen-Jim & Kevin Jim
Marcie & Kevin Herring
Carolyn Ho
Cynthia Jenness
Mr. Brian J. Malecek
Colbert & Gail Matsumoto
Law Offices of Ian L. Mattoch
Capt. & Mrs. Jim McCoy
Bruce McEwan & Lillian Cunningham
James & Lauren Moriarty
Konrad Ng & Maya Soetoro-Ng

Gary & Barbara North
Francis & Caroline Oda
William Orr
Perigon Wealth Management
Mr. Wayne M. Pitluck
Lemoine & Foster Radford
Mr. & Mrs. Roy Sonomura
Michael & Cynthia Stollar
Dennis Streveler
Joseph Uno & Aloma Wang
Robin Werner
Mr. & Mrs. Daniel E. White
Julia C. Wo
Ms. Nola Yee

\$1,000 - 2,999

Friends of HPR (17)
Mr. Bob Acree
Skip Adams
Nancy & Thomas Alejo
John Alexander
Patti Almiraz
Julia Alos
Aaron Alter
Kristine Altwies & Bruce Chen
Ms. Anne M. Alvarez
Sandra S. Anderson
Mr. & Mrs. John Andrews
Mr. Sam Araki
Judith A. Arrigo
Laura K. Assum-Dahleen
Family of Winifred Au
Mr. & Mrs. Sidney Ayabe
Lynn Babington & Randy Carpenter
Kris Baik
Karen E. Bail
Pauline L. Bailey
Jeremy & Michelle Baldwin
Baltoro Trust
Bank of Hawaii Charitable Foundation
David Baumgartner
Dr. Kate Bell & Dr. Tom Blackburn
Mr. & Mrs. Jack E. Belsom
Ann M. Bernson
Big Island Toyota
Mr. Charles Birkeland
Robert Emens Black Fund
Blees Piano Service
Mr. Richard Blum
Ms. Jennifer L. Bohlin

Marlene Booth & Avi Soifer
Tim Bostock & Melanie Holt
Dr. Kathryn Braun & Chris Conybeare
Helen & Rainer Brendel
Dr. & Mrs. Alan Britten
Margery Bronster
Antoinette Brown
Mr. James M. Brown
John Seely Brown & Susan E. Haviland
Ralph Bryldges
Heatherly Bucher
Diana M. Buckley & Bob Fazzi
Ms. Nancy J. Budd
Erik Burian & Brenda Jensen
Ronald & Kristina Burke
Susan Burriss
Ms. Georgine Busch
Joe Bush
Stephen & Julie Buto
Roberta W. Cable
Arabel Camblor
Francesca Carey
Carolyn Carley
John S. Carroll
Michael & Leslie Carroll
Marilyn Rose Carter
Robert & Teresa Cartwright
Dr. & Mrs. John Casken
Debra Caswell
Mr. & Mrs. Richard Chadwick
Steve & Susan Chamberlin
Susan & David Chandler
Ann & Albert Chang
Chia Chang
Mr. Clifford B. Chang

Hui-i Chen
Won-Yee Cheng-Leever
Mr. & Mrs. David Chevalier
Chauncey & Theodora Ching
Hung Wo & Elizabeth Ching Foundation
Ms. Anne M. Chipchase
Chun Kerr LLP
Ms. Sun Min Chun
Steven Chung
Maureen Clarke & John Sivigny
Robert & Edwina Clarke
Gerald Clay
Dr. & Mrs. Marc Coel
Mary Ann & Larry Collignon
Bill Comstock
Neal Conan & Gretel Erlich
John R. Condrey
Prof. & Mrs. John W. Conner
Don Conover
Mrs. Janet R. Cooke
Patricia & Chris Cooper
Ron & Myrna Cooper
Mr. & Mrs. Tony Crabb
The Hon. Virginia L. Crandall
Mrs. Katherine A. Crosier
Cunningham Cabinets
Mr. H. Dwight Damon
Shirley J. Daniel
James Dator
Elizabeth David-Ross
Darcy Davis
Davis Levin Livingston
Geraldine DeBenedetti
Stefanie Delmont
David DeLuca

Dr. & Mrs. Peter Denman
Jeanne B. Denton-Nelson
Dentons US LLP
Barbara M. Dinoff
Christopher & Masako Dix
Christopher & Starr Dods
Dods Foundation
Rosemary Domecki
Bill Dorman & Noriko Namiki
Stephen Dorman
Gavin Dougan
Mr. & Mrs. Nick Dreher
Peter Durst
Ms. Carolyn A. Eaton
Walter Eccles
Kaeti Ecker
Dr. Roger Ede
Joel & Laura Edelman
Debbie & Robi Elnekave
David & Tamae Erdman
Sumner & Angela Erdman
Dr. Lawrence Eron & Dr. Donna Cheng
Ms. Roxanna Faith
José A. Fajardo
Denise & David Falls
Janet (Jennie) Farley
Rebecca & John Faunce
Rosemary Fazio & David Randell
Mr. Josh Feldman
John & Kim Fenton
Charles Ferguson
Mr. Scott Ferguson & Ms. Joyce Miller
Mr. & Mrs. Joseph Ferraro
Mr. Binkley Fidge
Jane & Paul Field

Barbara Fischlowitz-Leong & Michael Leong
Dr. Judith FitzGerald
Marcy Fleming & Robert Wheeler
Foodland
Gabe Foreman
Tom & Virginia Forgatsch
Alfred Fortin
Ms. Tanja Foulds
Carol Fox & Jay Henderson
Ms. Patricia Franquez
Leighann Frattarelli
L. Richard & Susie Fried
Karin Frost
Dr. Sarah J. Fryberger
Mr. & Mrs. Gerard Fryer
Deborah Fulton
Dr. John T. Funai
Furniture Plus Design
Don & Carlene Furukawa
Geoff & Lena Galbraith
Lani Galetto
Joshua Garcia
Rhoody Lee & Alan Gartenhaus
Mr. & Mrs. Norman Glenn
Jodi Goh
Christopher & Michelle Goodin
Rose Marie Gooding
Dr. Mark Grattan & Dr. Elizabeth Tam
Stephen Green
Nancy Grekin
Rhonda Griswold
Kenneth & Katharine Hafner
Chris Haig
Mr. N. Robert Hale

Linda Hansen & Bruce Kau
Pete & Joan Hansen
Ms. Martha L. Hanson
Ms. Mary J. Harbold
Ms. Gayle Y. Harimoto
Law Offices of Brook Hart
Eric & Lynn Hashizume
Ms. Connie Hastert
Ms. Barbara Hastings
Hawaii Community Foundation
Hawaii Psychology Collective
Hawaiian Telcom, Inc.
Ms. Geraldine Hayes
Jim Hayes
Dr. & Mrs. Hugh Hazenfield
Mr. Rick A. Heltzel
Mark & Katie Hensley
Mr. Mel Hertz
Garrick Higuchi
Frances Hisashima
Mr. Peter S. Ho
Ellen Hocker
James P. Hogan
Ms. Carol Lee Hong
Lea Hong
Mr. & Mrs. Kevin Hopkins
Jim & Karen Howell
Patrick & Margret Hoy
Ms. Yvonne W. Hsieh
Mr. & Mrs. Gilman K. M. Hu
Laurel & Itaat Husain
Robb & Elodie Imonen
Susan Ing
Ms. Taylor Ishida
Jim Ishikawa

Glenn Ishioka	Sheree Latif	Mr. & Mrs. Robert K. Merce	Patricia Posadas	Sarah Smith	Dr. Alex B. Walter
Ms. Janell Israel	James Lawrence	Edwin L. Merideth, III	Lily & Jerry Prentiss	Janet Snyder	Dr. John & Dr. Anthea Wang
Gary A. James	Leavitt Yamane & Soldner	Mr. & Mrs. Howard T. Merl	Stephen & Jacqueline Proctor	Carol Ann & Mark Solien	Mr. & Mrs. Peter M. Wargo
Susan Jannuzzi & David White	Carol M. Lee	Richard & Judith Michaels	Ms. April Putnam	Thomas & Michele Sorensen	Dr. Robert Waterford
Mr. & Mrs. Randall (Randy) Jaycox	Mary Lou Lee	Geoffrey Michaelson & Lehua li-Michaelson	Dr. Deborah Putnam	Mrs. Kathleen M. Spalding	Jhamandas Watumull Fund
Elizabeth Johnson	Mathew & Jacqueline Lee	Dr. Charles F. Miller	Dr. Lee Putnam	Mrs. Susan B. Spangler	Mrs. Barbara W. Weaver
Jeannette Johnson & Ian Capps	Dr. & Mrs. Worldster Lee	Laurie Miller	Mr. & Mrs. Randy Rarick	Peter B. Sparks & Clytie P. Mead	Mr. & Mrs. Joseph Wee
Lynne Johnson & Randolph Moore	Joyce Lee-Ibarra	Thao Miller	Greg Ravizza & Kathleen Ruttenberg	Bruce & Genevieve Spear	Mr. Eldon L. Wegner
Ms. Patricia Johnson	Linda Levine	Mr. & Mrs. Paul Misura	R.E.A.P. Foundation	Ms. Mary Spears	Mr. Paul Weidig
Chuck Jones	Janet Lew	Mr. Roy Miyamoto	Phillip Reller & Trina Zelle	Cdr. Timothy J. Sprowls, USN (Ret)	Mr. & Mrs. Edward J. Weldon, Jr.
Kaiser Permanente	Mr. & Mrs. Robert A. Lipman	Ms. Jean Miyashiro	Dr. & Mrs. Steven Rhee	Jonathan Starr Foundation Inc.	Nancy Weller
Walter Kam	Lloyd Moore Foundation	Ms. Sandra L. Moneymaker	Stephen R. Ristow	Patricia G. Steele	Karen White
Bryan Kapeckas	Loden & Conahan	Cynthia & Richard Moon	Ms. Shaunagh Robbins	Stein Family Fund	Perry & Joan White
Charles Karnella	Steven Loui	Mr. & Mrs. William L. Moore	Michael Roberts & Michelle McGregor	D. Kent Stewart & Barbara Newton	Mr. & Mrs. Gaylord Wilcox
Mr. & Mrs. Edward Karrels	Dr. Deborah Love	Paul & Barbara Morgan	Trevor Rodrigues	Ms. Monica Stitt-Bergh	Mr. Gary L. Wild
Harry & Patti Kasanow	Linda Love	Mrs. Sally Morgan	Charles & Jennifer Rose	Mr. Warren Stone & Mrs. Karen Dyas	Jack & Ann Marie Wilder
Mr. & Mrs. Alvin Z. Katekaru	Ms. Brenda R. Lowrey	Ms. Marcia Morse	Mr. Peter L. Rosegg	Sandra & C. Earl Stoner	Timothy Wilhelm
Michael & Gail Kawaharada	Dr. & Mrs. Gordon K. Lowry, Jr.	Paul T. Murakami	John Ross	Stephanie A. Strickland	Keith Williams & Lisa Li
Rob Kay & Seini Mere Nawaqatabu	Carol K. Lum	Mr. Tom T. Muraoka	Ms. Linda Ross & Mr. David Reid	Mr. Gerald A. Sumida	Ms. Christine Wilson
Richard M. Kaya	Donna Lum & Larry Abbott	Jeanne Murata	Patrick & Stephanie Ross	Veronica Suozzi & Gregory Auberry	Dr. Ruth M. Wilson
Rupert Kealoha	Michael Lundrigan	J.N. & Linda Musto	Leonard Rossoff & Eileen Hilton	Dr. Randal Sutton	Sue A. Wilson Tabor
Cathleen Keene	Doug Lung	Ms. Joan Y. Namkoong	Mr. Scott Rowland	Donald Swanson & Barbara White	Windward Choral Society
Capt. David A. Kelikuli	Mrs. Mette W. Lyons	Caroline H. Neal	Mrs. Ruth Samuel	Anne Swayne	James & Juanita C. Wo Foundation
Dr. Katrena Kennedy & Randy Kennedy	Steve Macedo	Deborah Nehmad	Joao Santos	Dr. & Mrs. Curtis Takemoto-Gentile	Keith Wolter
Dr. & Mrs. Kenneth Kepler	Mr. Duncan MacNaughton	Deane Neubauer & Keiko Sakuma- Neubauer	Suzanne M. Sato	Sandra & Howard Takishita	Dr. & Mrs. William W. Won
Kessner Umebayashi Bain & Matsunaga	Mimi N. MacNaughton	Ed & Helen Noh	Ernest T. Scambos	Nolan & Lori Tamayori	Mr. Corey Wong
Ms. Nancy S. Kickertz	Helen MacNeil & Patrick McFadden	Mr. William F. Norwood	Maureen Schaeffer & Alan Price	Alexandra Tan	Linda Y. Wong
Mr. & Mrs. Robert Kildow	Katherine MacNeil	Mr. & Mrs. Rolando Oasay	Ronald Schaeffer	Dr. Robert Tanaka & Dr. April Leong	Ms. Lisa C. Wong & Mr. Warren Wong
James & Belinda Kiley	Mrs. Mary Anne Magnier	Lenore L. Ogawa	Mrs. Barbara Schatz	Mr. & Mrs. Chung-Shih Tang	Dr. Nathan A. K. Wong
Luke Kilgore	Mr. Aaron D. Mahi	David Ofer & Linda J. Zarchin	Karen Schlather	Family of Barry Taniguchi	Allen & Sally Wooddell
Alexander Kim	Natalie Mahoney	David Okabe	Mary Schlessman	Michael Tarring	Woodson & Allison Woods
Juli M. Kimura Walters	Nancy Makowski	Ms. Joyce Okano	Mr. George Schmelzer	Taylor Leong Chee	Chris Woodward
Kleintop & Luria LLP	Mr. Derrick Malama	Phillip B. Olsen	Dr. & Mrs. Niklas Schneider	Wesley Teraoka	Derek Woolbright-Hutchins
Ms. Carol Kleppin	Dr. Jacqueline R. Maly & Ted Maly	Cyrus & Paula Omidyar	Ms. Jane E. Schoonmaker	Dr. Craig Thomas & Ms. Susan Scott	Dr. Barbara E. Workman
Dr. Michael Kliks & Dolores Brockman	Mancini, Welch & Geiger LLP	Pam Omidyar	Peter & Flora Schupp	Michael F. Thompson	Veronica Gail Worth
Jeriod & Kara Klovas	Dolores Furtado Martin Foundation	Dr. Carlos A. Omphroy	Corina Scoggins	Joyce Timpson	Ms. Sharon Worthington
Wiley W. Knight	Gertraud Maskarinec	Christopher & Tina Oscar	Ms. Patricia A. Scullary	Mr. Michael Titterton	Margot & John Wray
Mr. & Mrs. Chester Koga	Kathryn Matayoshi	John Otte	Ms. Sheryl B. Seaman	Ms. Laurie Tochiki	Mr. & Mrs. George M. Wyman
Dr. Laurence N. Kolonel	Robin Matsukawa	Ms. Kimi Y. Oyama	Dr. Cecile Sebastian, D.D.S.	Dr. Christopher M. Tortora	Mr. Louis Peter Xigogianis
John & Kalowena Komeiji	Mr. & Mrs. Ernest Matsumura	Cynthia & Robert Pacheco	Shafer Philanthropic Family Fund	Van Tran	Dr. & Mrs. Craig A. Yamamoto
Isaac M. Kosasa	Elizabeth McBride	Eliza Paho-Demeter	Dr. David Shaw & Dr. Tom Kane	Tropical Music	Mr. Carl Yee & Ms. Mary Beth Wong
Dr. Drew Kovach	Cindy McCaffrey	James & Marilyn Pappas	Jane E. Sherwood & Robert Masuda	Ms. Elizabeth Truesdell	Ms. Valerie Yee
Dr. Kathleen Kozak	Scott McCaffrey & Deborah Luckett	Wayne Parsons Law Office	Margaret S. Shiba	Mr. & Mrs. Kent K. Tsukamoto	Gareth Yokochi
Steven Kramer	Ms. Catherine McElwee & Mr. Joe Smith	David Pence & Athline Clark	John Shigenaga	Richard Turbin & Rai Saint Chu	Dr. Lockwood S. J. Young
Stephen La Bash	Dr. David B. McEwan	Mrs. Bonnie Lisa Pestana	Mr. Daniel T. Shiu	TWANDA Foundation	Ms. Marlene Q. Young
Mr. Samuel Y. Lam	Michael McGrath	Ms. Ann M. Peters	Julie & Ralph Shohet	Edmundo Ty	Paula & Tim Young
Ms. Evelyn B. Lance	Jean McIntosh	Judy Mohr Peterson	Jeffrey Shonka	Peter Uehara	Timothy Young
Robert D. Lanser, Jr.	Michael McMahon	Louis & Flori Petri Foundation	Mr. Glenn Silva	Laila Valenta	Chow Yu & Scott Whiting
Dr. Edward S. Lanson	Dr. & Mrs. Michael J. Meagher	Jack Pettit	Dr. Arleene Skillman	Mrs. Frances Vaughan	Dr. Greg Yuen & Ms. Ruth Chang
Lorna Larsen-Jeyte & Albert Jeyte	Jonathan Meath	Ms. Regina R. Pfeiffer	Ms. Ann R. Sloat	Dunkin Walker	John Zak
David W. Larson & Janis Turner	Mark Medeiros	Jeanette Phillips	Kalani Sloat	Melinda Walker	Stanley & Janet Zisk
Mr. & Mrs. Walter J. Laskey	Jennifer Meehan		Clifford W. Smith	Jeff & Claudia Wallace	
Mr. David Lassner	Dr. John Melish & Dr. Marion Melish		Craig Smith & Melissa Smith-Zaninovic	Judi S. Walsh	

Legacy Society

Members of our Legacy Society may have designated Hawai'i Public Radio as a beneficiary in their will, trust, retirement plan or life insurance policy or, with their financial advisor, provided for the station in a specially devised tax-advantaged estate plan. Our profound thanks to those who have thoughtfully included HPR in their future planning.

Friends of HPR (23)	Estate of Mrs. Millie M. Dillard	Estate of Gail Hudson	Marcelius Charitable Trust	Estate of Joseph Rothstein	Estate of Ms. Angeline A. Walther
Estate of Dorothy R. Abthai	John Henry Felix	Estate of Richard & Margaret Inskeep	Mr. Richard S. Morris	Estate of Gordon Thomas Salter	Estate of Karen S. Watanabe
Estate of Mrs. Harriet D. Baldwin	Mr. Scott Ferguson & Ms. Joyce Miller	Estate of Henry K. Iwasa	Mrs. Gloria Munson	Estate of Patricia Sands	Estate of Walter Victor Weber, Jr.
Estate of Mrs. Ruth S. Ballard	Estate of Shirley N. Ferreira	Milinda Jaffe	Estate of Keiji Murakami	Paul Schwind & Mollie W.M. Chang	Monique & Gary Weisman
Estate of Ms. Nancy M. Bannick	Estate of Alice Folkart	Mark & Carol Johnson	Estate of Judith R. Neale	Estate of Mrs. Mary M. Shaw	Perry & Joan White
Carl & Marilyn Bernhardt	Mr. Steve Frank	Mo'o Kana'io	Dr. Norma Nichols	Anthony J. Spinetta	Mr. George Willoughby
Dr. Roger Brault & Dr. Felice Brault	Suzanne Frayser	Daniel & Jane Katayama	Marilyn Nicholson	Estate of Ms. Barbara J. Steffee	Mr. & Mrs. Stephen Wilson
Dr. Joan E. Canfield & William Kramer	Mrs. Sandra P. Fricke	Carol Kellett	William & Jan Olson	Nathan Sult & Beth Tarter Sult	Mr. Louis Peter Xigogianis
Celia & Lloyd Canty	Mr. Ray Galas	Carolyn Kimball	Estate of Ms. Anita Ouverson	Estate of Dr. Lynn N. Tabata	Mr. Carl Yee & Ms. Mary Beth Wong
Mr. Scott Carter	Jeffrey & Dominique Gere	Juli M. Kimura Walters	Ms. Ann M. Peters	Ms. Elizabeth A. Tajima	Myrna Zezza
Ms. Lee G. Cone & Mr. Michael Cone	Arien B. Grabbe	Estate of Eugene Kincaid & Mitsugi Murakami	Mr. J. William Potter, Jr.	Eileen Tamura & Dave Raney	Stanley & Janet Zisk
Mrs. Carol J. Coops	Estate of Mrs. Luvia T. Gregg	Estate of Barry LeFevre	Marilyn A. Requena	Estate of Mr. Robert B. Thomas	
Mr. & Mrs. R. Dougal Crowe	Estate of Liselotte S. Grieshaber	Mike Leidemann	Mr. Samuel E. Rhoads	Estate of Ms. Norrie Thompson	
Richard & Myrna Cundy	Estate of Mrs. Freddie Harby	Ms. Phyllis S. K. Look	Ms. Marie Riley	Rodrik S. Thompson	
Michael W. Dabney	Mr. Stephen C. Haus	Estate of Mrs. Lois Luehring	Maxine Robson Endowment Fund	Mrs. Alice K. Tucker	
Carol & Clive Davies	Joseph R. Himmel Trust	Mr. Franklin T. Luke	Ms. Kathy Rose	Janis Turner	
Ms. Carolyn Davis	Alan Howard & Janet P. Rensel		Shawn Rose & Taj Carbrey	Joseph Uno & Aloma Wang	

Memorial Gifts

The gifts made in memory of departed loved ones or in recognition of the esteemed friends listed below were gratefully received. HPR is proud to play a part in honoring them and their contributions to our community.

WINI AU Ahana Family Kathryn Au Lydia Au Stanford Au Nora Beaumont Sam Camp Maureen Chang & Family Mr. & Mrs. Charles Choy Aileen Chun Alberta Chun Bassil & Harriet Dunn and Family Arnold Fuji Mark & Raquel Hironaka Ruth Izawa Dr. & Mrs. Calvin Kam	Carol Konda Edna Lopes, Raynette Lopes & Stephanie Uejo James & Lynda Lui-Kwan Lillian Mashima Roy Morimoto Richard & Victoria Mukai Mr. & Mrs. Seichi Oyama Karen M. Scharfenstein Jim & Sonia Soriano Cora Soriano Mr. Moriso Teraoka Rudy & Nora Trias Florence Tripp Reynold Yoshimura & Family Dr. & Mrs. Joseph Young	MICHAEL BIGNAMI Lezlie Bignami DAVID K. Y. CHUNG Michael & Amelia Chu Norma Jean Crowder Jody Gilbert Mr. N. Robert Hale Mr. & Mrs. Tyrus Ishii Clinton & Patricia Lee Elton C. Lee Leighton Liu Jon Ogata Ms. Sandra K. Rhines Gordon & Ann Tang Carroll & Nancy Taylor	Patsy H. Tom Franklin & Jody Wong Ms. Valerie Yee ALICE E. DEAN-DANIEL Tom Daniel LYOYD GILLIOM Mr. Herman B. Goldman MICHELE HIGA Dai So & Eleanor Leong Chang Fund Mr. & Mrs. Charles A. Higa GAIL MOFFATT HUDSON Phillip B. Olsen	JEFF MORRELL Lisa Duncan-Pullen Terraphase Engineering Inc. JUDY NEALE Wailua Brandman SUZANNE REAGAN Janice Reagan COKIE ROBERTS Mr. Ian L. Mattoch MAIZIE CAMERON SANFORD Mr. Rick Chatenever	BERTHA TAHIRA Brett Tokairin BARRY TANIGUCHI Family of Barry Taniguchi TRUDIE TAYLOR David Taylor PAULINE THOMSON Ms. Valerie Yee BILL & LYNN VOGT Sara Mizban
--	---	--	---	--	--

Fund Drive Thank You Gifts, Food Donors, & Volunteer Groups

Mahalo nui loa to those who contribute unique premium gifts that help our fund drives resonate with our listeners; to the caterers who keep our guests, volunteers, and staff well fed; and to the organizations that help staff our phone banks.

FOOD Foodland Farms InVision Imaging Ruby Tuesday Hawaii Uncles Homemade Ice Cream Sandwiches Zippys	Maunakea Beach Resort Merriman's Ward Village Merriman's Fish House - Poipu Kauai Merriman's Kapalua Merriman's Waimea MOKU Kitchen Monkeypod Kitchen by Merriman, Kaanapali Monkeypod Kitchen by Merriman, Ko Olina Monkeypod Kitchen by Merriman, Wailea Nico's Pier 38 Paiko Prince Waikiki Rick Bartalini Ruby Tuesday Hawaii Shangri La Museum of Islamic Art, Culture, & Design Sustainable Coastlines Hawaii The CAB/CabBUX Tori Richard Tropical Dreams Ice Cream Waikiki Aquarium Westin Hapuna Beach Resort	AIA Honolulu Aloha Harvest Ameresco Anthology Marketing Group Association for Conflict Resolution Hawaii Awesome Foundation Azure Ala Moana Bank of Hawaii Blue Note Hawaii Bluegrass Hawaii Caledonian Society Campbell High School Chamber Music Hawaii Children's Literacy Hawaii Coldwell Banker Agents for Change Envision Hawaii Evergreen by Debra FICOH First Hawaiian Bank Foodland Friends of Lyon Arboretum Friends of the Library of Hawaii Furniture Plus Design Gay Men's Chorus Habitat for Humanity HANO Hawaii Arts Alliance	Hawaii Community Benefits Consultants Hawaii Community Foundation Hawaii Craftsmen Hawaii Filmmakers Collective Hawaii Foodbank Hawaii International Child Hawaii Library Association Hawaii Literacy Hawaii Magazine Hawaii Meals on Wheels Hawaii Psychology Collective Hawaii Society of Business Professionals Hawaiian Telcom Hawaiian Air HECO Hickam AFB HMSA Honolulu Museum of Art Honolulu Habitat for Humanity Honolulu Magazine Honolulu Waldorf School HPR Board of Directors HPR CAB HPR Gen Listen HSTA Independent Order of Odd Fellows Kaiser Permanent	Kiwanis Club of Kaneohe Kokua Mau League of Women Voters Leeward Community College Legacy of Life Malama Mānoa Mānoa Valley Theatre Montessori Community School The Nature Conservancy ProService Punahou School Alumni Returned Peace Corps Volunteers of Hawaii RYSE SAG/AFTRA SEEQS Servco Society of Professional Journalists Sustainable Coastlines Symphony Associates Teach for America UH Law Students UH Women's Basketball Team Ulupono Initiative Windward Choral Society Zippys	ATTORNEY COMMUNITY APPRECIATION DAY SPONSORS Sidney K. Ayabe, Esq. Bays Lung Rose & Holma Belles Graham Proudfoot Wilson & Chun Bronster Fujichaku Robbins Chun Kerr LLP Clay Chapman Iwamura Police Nervell Cox Fricke LLP Davis Levin Livingston Dentons US LLP Dispute Prevention & Resolution Inc Law Offices of Brook Hart Kessner Urabayashi Bain & Matsunaga Kleintop & Luria LLP Leavitt Yamane & Soldner Loden & Conahan Mancini Welch & Geiger LLP Law Offices of Ian L. Mattoch Merchant Horovitz & Tilley Wayne Parsons Law Office Taylor Leong Chee Trecker Fritz & Williams Emily Kawashima Waters, AAL, LLLC
THANK YOU GIFTS AIA Honolulu Alaska Airlines Bess Press/Da Shop Blue Note Hawaii Broadway Hawaii Chef Mavro Restaurant Forest Bathing Hawaii Grand Wailea Resort Gyotaku Hawaii Forest and Trail Highway Inn Hawaii International Film Festival Hawaii Opera Theatre Hawaii Symphony Orchestra Il Gelato Jeff Peterson Kapolei Golf Club Magnolia Hawaii Maui Film Festival	GROUPS & ORGANIZATIONS AARP				

Underwriters & Foundations

HPR is truly locally managed and locally funded, a critical function of our independence. Our program underwriters help the station meet its programming costs, while affiliating their names with a valuable community service.

(Support and Gifts received from January 1, 2018 - December 31, 2019)

Achieve3000 Advanced Psychiatric Therapeutics Airbnb Ala Moana Center Ala Moana Hotel by Mantra Aloha Hospitality Professionals Aloha International Piano Festival Aloha Theatre	ALTRES ALTRES Medical ALTRES Staffing Ameresco American Savings Bank ANA ANA Honolulu Music Week Anchor Systems Hawaii	Anna O'Brien's Appetito Craft Pizza & Wine Bar Assets School Associa Hawaii Azure Restaurant at The Royal Hawaiian, a Luxury Collection Resort Ballet Hawaii BAMP Project & The Republik	Bank of Hawaii Bavarian Motor Experts Beach Tree Restaurant, Four Seasons Hualalai Beachhouse at the Moana Berkshire Hathaway Home Services Hawaii Realty Berlin & Beyond Honolulu Film Festival	BIA-Hawaii Bill Fernandez Bishop Museum Blees Piano Service Blue Hawaiian Helicopters Blue Note Hawaii Blue Planet Foundation Blue Planet Foundation, Island Pulse	Board of Water Supply Broadway in Hawaii Bronster Fujichaku Robbins Busch Consulting TheCAB Cadinha & Company Carlsmith Ball LLP Caswell Orthodontics, Dr. Kimi Caswell
---	---	--	---	---	--

Central Pacific Bank
 Chamber Music Hawaii
 Chaminade University
 The Chinatown Merchants Association
 Choir of the Lutheran Church
 The Cole Academy
 Compassion & Choices
 Compass Home Loans
 Cyanotech Corporation
 Damon Key Leong Kupchak Hastert
 Dr. David Hiranaka, MD, DMD
 David Sedaris
 Davis Levin Livingston
 DAWSON
 Dean & Deluca Hawaii
 Desperado Orchestra
 Diamond Head Theatre
 Douglas Trade Shows
 Dowling Company
 Early Music Hawaii
 'Ekahi Health
 Emporium Presents
 Enel X
 Enel X North America, Inc.
 Engaging the Senses Foundation
 Evergreen by Debra, LLC
 EVO Hemp
 53 By The Sea
 Falun Dafa Association of Hawaii
 FarmLovers Farmers' Markets
 Hale'iwa Farmers' Market
 Kaka'ako Artisan Fair
 Kaka'ako Farmers' Market
 Kailuotown Farmers' Market
 Pearlridge Farmers' Market
 Wednesday Kaka'ako Sunset Farmers' Market
 FIM Group
 Ferraro Choi
 Financial Benefits Insurance, Inc.
 First Hawaiian Bank
 First Insurance Company of Hawaii
 FLEMING & Associates, LLC
 Foodland
 Foodland Farms
 Foodscapes Hawaii
 Forest Bathing Hawai'i
 Four Seasons Resort Hualalae
 The Friends of St. Patrick of Hawaii
 Friends of Waikiki Aquarium
 Furniture Plus Design
 G70
 GEN Korean BBQ House
 Goethe-Institut
 Good Life Expo, Inc -
 Hawaii Seniors' Fair
 Gourmet Events Hawaii
 Haleakala Ranch
 Haleakala Waldorf School
 Hanahau'oli School
 Handcrafted Restaurants
 The Beach House, Po'ipū, Kauai
 Moku Kitchen, SALT at Kaka'ako
 Monkeypod Kitchen, Ka'anapali, Maui
 Monkeypod Kitchen, Ko Olina, O'ahu
 Monkeypod Kitchen, Wailea, Maui
 Harbor Restaurant at Pier 38
 Hastings & Pleadwell,
 A Communication Company
 Hawai'i Association of
 Independent Schools
 Hawai'i Book & Music Festival

Hawai'i Community Foundation
 Hawaii Dermatology &
 Plastic Surgery Centers
 Hawaii Forest & Trail
 Hawai'i Gas
 Hawaii International Film Festival
 Hawaii International Guitar Series
 Hawai'i Life
 Hawaii Opera Theatre
 Hawaii Pacific Dental Group,
 Dr. Rohinton "Ron" Patel, DMD
 Hawaii Pacific University
 Hawai'i Performing Arts Festival
 Hawaii State Department of Health
 Hawai'i Symphony Orchestra
 Hawaii Theatre Center
 Hawaiian Airlines
 Hawaiian Cool Water
 Hawaiian Electric Company
 Hawaiian Electric Industries
 Hawaiian Lumber
 Hawaiian Mission Houses
 Hawaiian Native Corporation
 Hawaiian Paddle Sports
 HEMIC
 Highway Inn Hawaiian Food
 Honolulu Chamber Music Series
 Honolulu Exposed
 Honolulu Festival Foundation
 Honolulu Financial Partners,
 Jeff White CFP
 Honolulu Habitat for Humanity
 Honolulu Magazine
 Honolulu Waldorf School
 HPM Building Supply
 Hula's Bar & Lei Stand
 Impact Hub Honolulu Coworking
 Inter-Island Solar Supply
 'Iolani School
 The Irish Rose Saloon
 Island Insurance Co., Ltd.
 Jake Shimabukuro
 Janell A. Israel & Associates
 Jenkins Eye Care,
 Dr. Tyne Jenkins & Dr. Jeffrey
 Peterson
 Johnny Nicholas
 David and Shoshanna Jonas
 Kabuki in Hawaii 2019
 The Kahala Hotel & Resort
 Kahalu'u Gallery & Gardens
 Kahi Mohala
 Kahilu Theatre
 Kaiser Permanente
 Kamuela Farmers Market
 Kamuela Philharmonic Orchestra
 Kapolei Golf Club
 Kawamata Farms
 Kelley O'Neil's
 Kiholo Kai
 Kilauaea Lodge
 Kilin Reece
 Kona Choral Society
 Kona Historical Society
 Kona Stories
 Koolau Women's Healthcare
 Kuhio Beach Grill
 Kumu Kahua Theatre
 Laurence Hobgood
 Le Jardin Academy
 The Leeward Theatre at
 Leeward Community College

Legacy of Life Hawai'i
 Live Nation
 Living Breath LLC
 Locations
 Lutheran Church of Honolulu
 M Dyer and Sons
 MagicSpace Entertainment
 Magnolia Boutique & Gallery
 Manoa Valley Theatre
 Marriott International
 MASON
 Matson, Inc.
 Maui Arts & Cultural Center
 Maui Chamber Orchestra
 Maui Classical Music Festival
 Maui Film Festival
 Maui Ocean Center
 Maui Pops Orchestra
 Maui Tropical Plantation
 Mauna Kea Beach Hotel
 Mauna Lani Resort and Mauna Lani,
 Auberge Resorts Collection
 Mercer Advisors
 Merriman's Restaurants
 Merriman's Fish House, Kauai
 Merriman's Gourmet Pizza & Burgers,
 Kauai
 Merriman's Kapalua, Maui
 Merriman's Waimea, Big Island
 Merriman's Ward Village, Honolulu
 Mid-Pacific Institute
 The Mill House Restaurant
 Missouri University of Science and
 Technology
 Moana Surfrider,
 A Westin Resort & Spa
 Moir Financial
 Montessori Community School
 Dr. Peter Mouginis-Mark,
 SOEST-UH Manoa
 MYO Pain Relief Center
 National Kidney Foundation of Hawai'i
 Nico's Kailua
 Nico's Pier 38
 Nico's Upstairs
 Nutrex Hawaii
 O'ahu Choral Society
 'Olelo Community Media
 Dr. Carlos Omphroy
 O'Toole's Irish Pub
 Pacific & Asian Affairs Council
 Pacific American Lumber
 Pacific Buddhist Academy
 Pacific Database
 Pacific Vision Institute of Hawaii
 Paiko
 Parker School
 Pata Productions
 PBS Hawai'i
 PCATT, Pacific Center for
 Advanced Technology Training at
 Honolulu Community College
 Piano Planet
 Pineapple Tweed
 Planned Parenthood
 Prince Resorts Hawaii
 Prince Waikiki
 ProService Hawaii
 Pueo Gallery
 Punahou School
 The Queen's Health Systems
 The Rice Partnership

Ron Artis II
 Joseph Rothstein
 The Royal Hawaiian,
 a Luxury Collection Resort
 Ruby Tuesday Hawaii
 Sack N Save
 Sacred Hearts Academy
 St. Andrew's Schools
 Saint Francis School
 The Salvation Army
 Hawaiian & Pacific Islands Division
 Servco
 Servco Pacific Inc.
 Shen Yun Show
 simplicityHR by ALTRES
 SMS
 Sony Pictures Classics
 SPG Resorts
 Still & Moving Center
 Sutter Health Kahi Mohala
 Tara Boone Design House
 Taormina Sicilian Cuisine
 The Tuesday Agency
 Tim Ho Wan Waikiki
 Tony Lim CPA
 Tori Richard
 Transportation Security Administration
 Trupanion
 U.S. Classic Guitar
 'ULU Ocean Grill & Sushi Lounge,
 Four Seasons Hualalae
 Ulupono Initiative
 University of Hawai'i at Manoa
 College of Languages, Linguistics &
 Literature
 Department of Urban & Regional
 Planning
 Kennedy Theatre
 Outreach College
 Public Administration Program
 School of Pacific and Asian Studies,
 Asian Studies Program
 The Shidler College of Business
 William S. Richardson School of Law
 University of Hawaii Honolulu Community
 College
 University of Hawaii Leeward Community
 College
 Urgent Care Hawaii
 Vacasa Hawaii
 Veterinary Emergency + Referral Center
 of Hawaii, part of Ethos Veterinary
 Health
 Ward Research
 Waikiki Aquarium
 Waikiki Beach Marriott Resort & Spa
 Waimea Valley, Hi'ipaka LLC
 WDI International
 We Go Notary
 West Hawaii Dance Theatre & Academy
 The Westin Hapuna Beach Resort
 Zippy's Restaurants
 ATHERTON CONCERT SERIES
 Winter: Bonnie Rice and The Rice
 Partnership
 Summer: Ameresco - 2019
 The Kahala Hotel & Resort - 2020
 THE BEST OF ALOHA SHORTS
 - LIVE!
 Le Jardin Academy

**THE BEST OF ALOHA SHORTS -
 ON THE ROAD**
 The Cades Foundation
 Hawaiian Airlines
 Kamuela Farmers Market
 Servco
**FIRST TAKE WITH SCIENCE
 FRIDAY**
 Chaminade University
 HPM Building Supply
 Le Jardin Academy
 Sacred Hearts Academy
 Hospitality Sponsors
 Prince Waikiki
 The Westin Hapuna Beach Resort
**HAWAII SYMPHONY
 ORCHESTRA BROADCASTS**
 Furniture Plus Design
HPR LOCAL TALK SHOW FUND
 Busch Consulting
**HPR & Hawaii Theatre Center Present:
 IRA GLASS IN "SEVEN THINGS
 I'VE LEARNED"**
 Anthology Marketing Group
HPR COMMUNITY CALENDAR
 The Shidler College of Business,
 University of Hawai'i at Manoa
THE JAZZ CALENDAR
 Blue Note Hawaii
HPR LOCAL TALK SHOW FUND
 Busch Consulting
 Chaminade University
 'Ekahi Health
 Haleakala Waldorf School
 Hastings & Pleadwell, A Communication
 Company
 Hawai'i Pacific University
 Honolulu Waldorf School
 Impact Hub Honolulu Coworking
 Inter-Island Solar Supply
 Island Insurance
 Kaiser Permanente
 Locations
 Moir Financial
 Pacific Database
 PCATT, Pacific Center for
 Advanced Technology Training at
 Honolulu Community College
 The Rice Partnership
 Sacred Hearts Academy
 St. Andrew's Schools
 Ulupono Initiative
 Urgent Care Hawaii
**MOANANUIĀKEA FILM
 SCREENINGS**
 DAWSON
STREAMING
 BIA-Hawaii
 Blue Note Hawaii
 Chaminade University
 First Hawaiian Bank
 The Friends of St. Patrick of Hawaii
 Hawai'i Symphony Orchestra

Hawaiian Electric Company
 Locations
 MASON
 Matson, Inc.
 Maui Arts and Cultural Center
 Mid-Pacific Institute
 Moana Surfrider, A Westin Resort & Spa
 Moir Financial
 National Kidney Foundation of Hawai'i
 Nutrex Hawaii
 The Royal Hawaiian, a Luxury Collection
 Resort
FOUNDATIONS & TRUSTS
 Friend of HPR (I)
 ABC Stores
 David Aronow Foundation
 Armstrong Foundation
 Baltoro Trust
 Bank of Hawaii Charitable Foundation
 Evalyn Bauer Foundation
 Bendon Family Foundation Inc.
 Blue Planet Foundation
 The Cades Foundation
 Hung Wo & Elizabeth Ching Foundation
 Larry and Beatrice Ching Foundation
 Davis Levin Livingston Charitable
 Foundation
 Dods Foundation
 Dorrance Family Foundation
 First Hawaiian Bank Foundation
 Foodland Give Aloha
 Joseph C. Grossman Foundation
 John R. Halligan Charitable Fund
 Hana Maui Trust
 Hawai'i Community Foundation
 Bill Healy Foundation
 HPM Building Supply Foundation
 Ernest H. Hui Family Foundation
 Ifuku Family Foundation
 Island Insurance Foundation
 James & Juanita Wo Foundation
 Johnson Ohana Foundation
 Lloyd Moore Foundation
 Marcellus Charitable Trust
 Marianne Steffik Irish Fund
 Dolores Furtado Martin Foundation
 Meshewa Farm Foundation
 O.L. Moore Foundation
 Nuestro Futuro Foundation
 Dr. & Mrs. L.Q. Pang Foundation
 Louis & Flori Petri Foundation
 Pikake Foundation
 R.E.A.P. Foundation
 Shidler Family Foundation
 Stable Foundation Inc.
 Jonathan Starr Foundation Inc.
 Keith and Polly Steiner Family Foundation
 Sidney Stern Memorial Trust
 TWANDA Foundation
 Jhamandas Watumull Fund
 Weissman Family Foundation
 Western Union Foundation
 G.N. Wilcox Trust
 F.J. Zimmerman Foundation Inc.



HPR's Classical Music hosts. Photo: Judy Anderson



Panel discussion at Hawai'i Island screening of Moananuiākea. Photo: Victoria Lee

Look Who's On Board

HPR Board of Directors 2019

CHAIR

Barbara A. Hastings

VICE CHAIR

Francis S. Oda

SECRETARY

Dawn Suyenaga

TREASURER

Linda Lee K. (Cissy) Farm

MEMBERS

Dr. Alan Britten
Dave DeLuca
Frank Haas
Marcie Uehara Herring
Susan Ing
Bryan Kapeckas
Kathryn S. Matayoshi
Konrad Ng, PhD.

Chuck Mitsui

Barry Rivers
Kenneth S. Robbins - immediate past chair
Anne Swayne
Joe Uno
Dr. Bill Wiecking
Carol Yotsuda

EX-OFFICIO

José A. Fajardo, President & General Manager
Nancy Budd, CAB Chair

SENIOR STAFF

Valerie Yee, Vice President & Assistant General Manager
Bernadette K.J. Shimono, Vice President Finance & Controller
Bill Dorman, Vice President/News Director
Cat Gelman, Vice President, Corporate Relations

Community Advisory Board

CAB CHAIR

Nancy Budd

CLASS OF 2021

Thomas Benedict, Honolulu, O'ahu
Jennifer Benz, Kamuela, Hawai'i Island
Bill Gundry, Kihei, Maui
Catherine (Cat) Howland, Honolulu, O'ahu
Jim Murphy, Honolulu, O'ahu

Vika Fitts Milgrim, Kihei, Maui

Chris Spinosa, Kapa'a, Kauai
Claire Shimabukuro, Honolulu, O'ahu
Neil Tsukayama, Kane'ohe, O'ahu
Sharon Worthington, Kekaha, O'ahu

CLASS OF 2022

Bettina Ackermann, Kula, Maui
Kelsie Aguilera, Honolulu, O'ahu
Donna Blanchard, Honolulu, O'ahu
Clive Davies, Kamuela, Hawai'i Island
Bonnie Irwin, Hilo, Hawai'i Island

Robin Kaye, Lāna'i City, Lāna'i

John Lunn, Hoolehua, Moloka'i
Anthony McCurdy, Honolulu, O'ahu
Peter Merriman, Lahaina, Maui
Treena Shapiro (Miyamoto), Kailua, O'ahu

Generation Listen

This volunteer cohort serves to attract and engage younger listeners with HPR through a series of social and community service events.

CO-CHAIRS

Kelsie Aguilera
Nainoa Mau

Nelisa Asato

Sarah Bauer
Stephanie Chang
Jason DeMarco
Alana Eagle

Sylvia Flores

Dabney Gough
Chloe Hartwell
Katherine Hernandez
Brooke Hunter

Matt Miller

Sara Mizban
Diane O'Neal
Ryan Sakuda
Martha Serogy

Daniel Simonich

Suzanne Skjold
Anne Weber
Randy Wong
Nick Yee



Having fun at the Spring Fund Drive. Photo: Dabney Gough



Generation Listen. Photo: Dathan Choy

HPR Staff, Hosts, and Contributors

SENIOR MANAGEMENT

José A. Fajardo, President & General Manager
Bill Dorman, Vice President & News Director
Cat Gelman, Vice President, Corporate Relations
Dabney Gough, Director of Marketing & Communications
Bernadette K.J. Shimono, Vice President Finance & Controller
Valerie Yee, Vice President & Assistant General Manager

MEMBERSHIP SERVICES AND DEVELOPMENT

Gene Evans, Major Gifts Manager
Lela Joseph, Membership Assistant
Victoria Lee, Membership Coordinator

Russell Subiono, Pledge & Listener Experience Producer
Courtney Thomas, Membership Manager

UNDERWRITING

David Bearden, Corporate Relations Associate
Chikako Epure, Corporate Relations Accounting Assistant
Donna Lum, Corporate Relations Assistant
Liane Sunn, Corporate Relations Associate

NEWS/TALK

Sherry Bracken, Hawai'i Island Contributing Reporter
Neal Conan, Host, *Pacific News Minute*
Catherine Cruz, *The Conversation*
Howard Dicus, Business News Reporter, *Hawaii News Now*

Bill Dorman, Vice President, News Director/Host, *Asia Minute*

Ryan Finnerty, Government & Public Policy Reporter

Casey Harlow, Producer/Digital Content
Kūuwehi Hiraishi, General Assignment Reporter

Dr. Kathleen Kozak, Host, *The Body Show*

Dave Lawrence, Local Host, *All Things Considered, Helping Hand, Stargazer*

Burt Lum, Host, *Byemarks Café*

Derrick Malama, Local Host, *Morning Edition*

Ashley Mizuo, General Assignment Reporter

A. Kam Napier, Editor-in-Chief, *Pacific Business News*

Sandee Oshiro, News Editor

Harrison Patiño, Producer, *The Conversation*

Noe Tanigawa, Arts & Culture Reporter

Lillian Tsang, Producer, *The Conversation*

Jason Ubay, Producer, *The Conversation*

Jackie Young, Local Host, *Weekend Edition*

MUSIC HOSTS

Jon Alan, *Blues from the Basement; B-Sides and Beyond*

Judy Anderson, classical music

Blair Boone-Migura, *Singing and Other Sins*

Ian Capps, *The Early Muse*

Ray Cruz, *Latin Beat*

Craig DeSilva, *Evening Concert*

Howard Dicus, *Howard's Day Off*

Gary Hickling, *Singing and Other Sins*

Charles Husson, *Evening Jazz*

Louise Lanzilotti, *Classical Pacific*

Derrick Malama, *Kanikapila Sunday*

Seth Markow, *The Real Deal*

Paige Okamura, *Bridging the Gap*

Harrison Patiño, *Bridging the Gap*

Gene Schiller, *Morning Café / Morning Concert; Sunday Brunch*

Sharene Lum Taba, classical music

Jason Taglianetti, *Applause In a Small Room*

Sandy Tsukiyama, *Brazilian Experience*

Nick Yee (dj mr. nick), *Bridging the Gap*

John Kalani Zak, *Evening Concert*

ADMINISTRATION AND OPERATIONS

Aisha Kadomatsu, Board Operator

David Carranza, Board Operator

Michael Chauvin, Board Operator

David Chong, Board Operator

Ray Cruz, Manager of Operations

Zoe Dym, Board Operator

Thomas Hamasaki, Board Operator

Kevin Hashiro, Board Operator

Charles Husson, Director of Facilities

Conor Medeiros, Board Operator

Don Mussell, Broadcast Engineer

Leon Naldo, Board Operator

Kela Neil, Board Operator

Maggie Ryan, Administrative Assistant

Gene Schiller, Music Director

Joan Schwandt, Accounting Assistant

Jason Taglianetti, Multimedia Production Manager

Ruth Uemura, Atherton Studio House Manager

Nick Yee, Manager of On-Air Products



BOTANICAL GARDENS

Explore Hawai'i's finest collection of rare and native plants, flowers, and wildlife



CULTURAL ACTIVITIES

Discover authentic archaeological sites; learn Hawaiian crafts, games, and more



WATERFALL

Visit the heart of the Valley and swim at Waihī Falls



WAIMEA VALLEY
HI'IPAKA LLC

ON THE NORTH SHORE ACROSS FROM WAIMEA BAY

OPEN DAILY 9 AM - 5 PM

CALL: (808) 638-7766



@WAIMEAVALLEY



@WAIMEAVALLEYOAHU

WHERE HAWAI'I COMES ALIVE

WAIMEAVALLEY.NET

Hawai'i Public Radio

738 Kāhaka Street Ste 101
Honolulu, Hawai'i 96814-3726

NONPROFIT
ORGANIZATION
U.S. POSTAGE
PAID
HONOLULU, HI
PERMIT NO. 1459



Hawai'i Public Radio Annual Report 2019